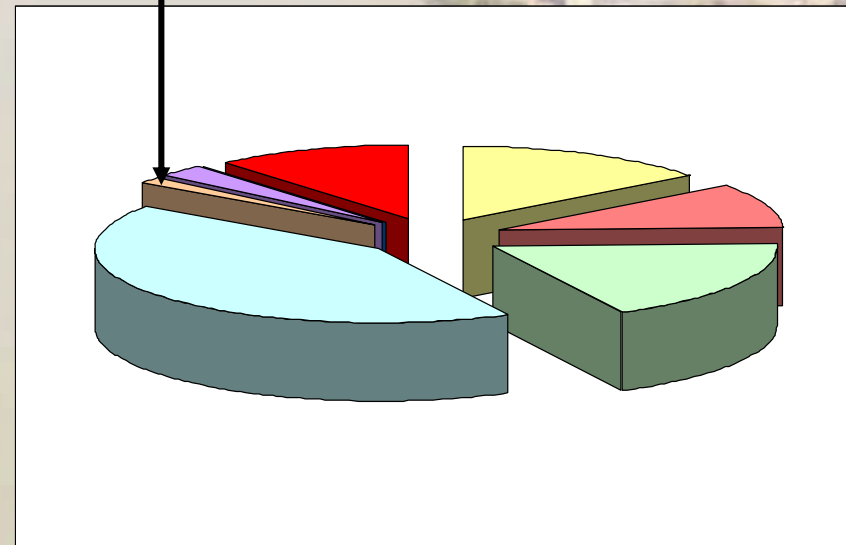


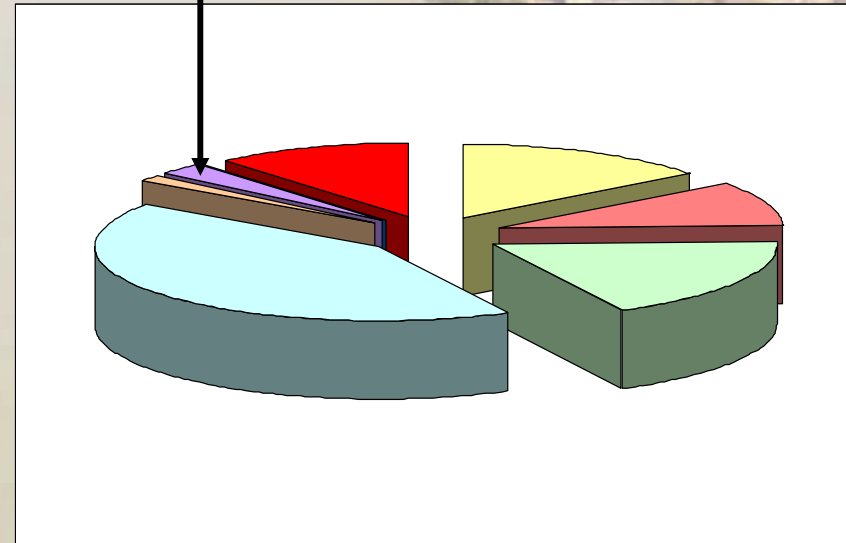
The Detroit River International Crossing Study

- Proposed “Workshop”
Land Uses – Community
Services
- **“Workshop Exercise”**
20 acres



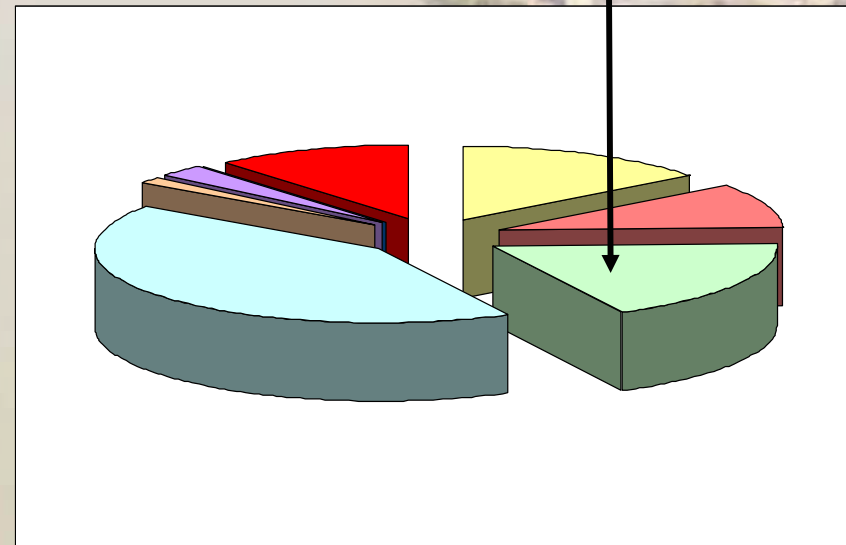
The Detroit River International Crossing Study

- Proposed “Workshop” Land Uses – Educational
- “Workshop Exercise”
37 acres



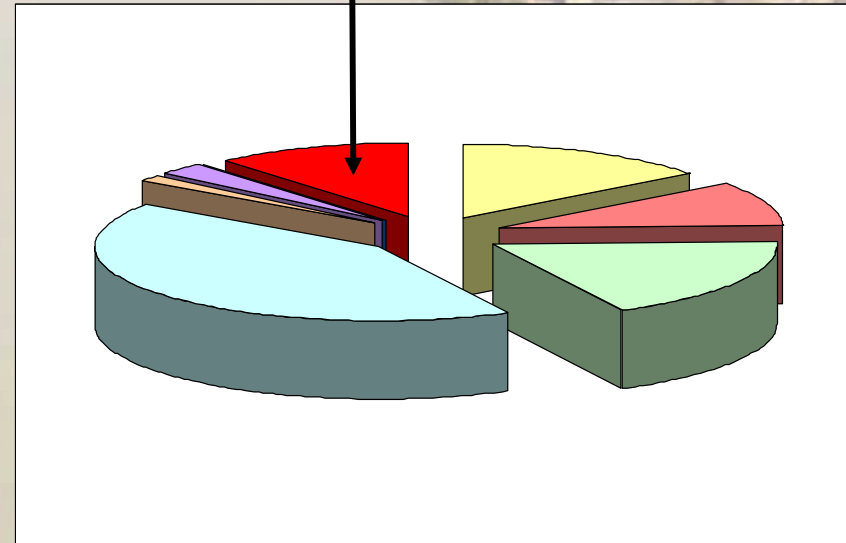
The Detroit River International Crossing Study

- Proposed “Workshop” Land Uses – Recreational / Open Space
- **“Workshop Exercise”**
244 acres



The Detroit River International Crossing Study

- Proposed “Workshop” Land Uses – International Plaza
- “Workshop Exercise” 150 acres



The Detroit River International Crossing Study

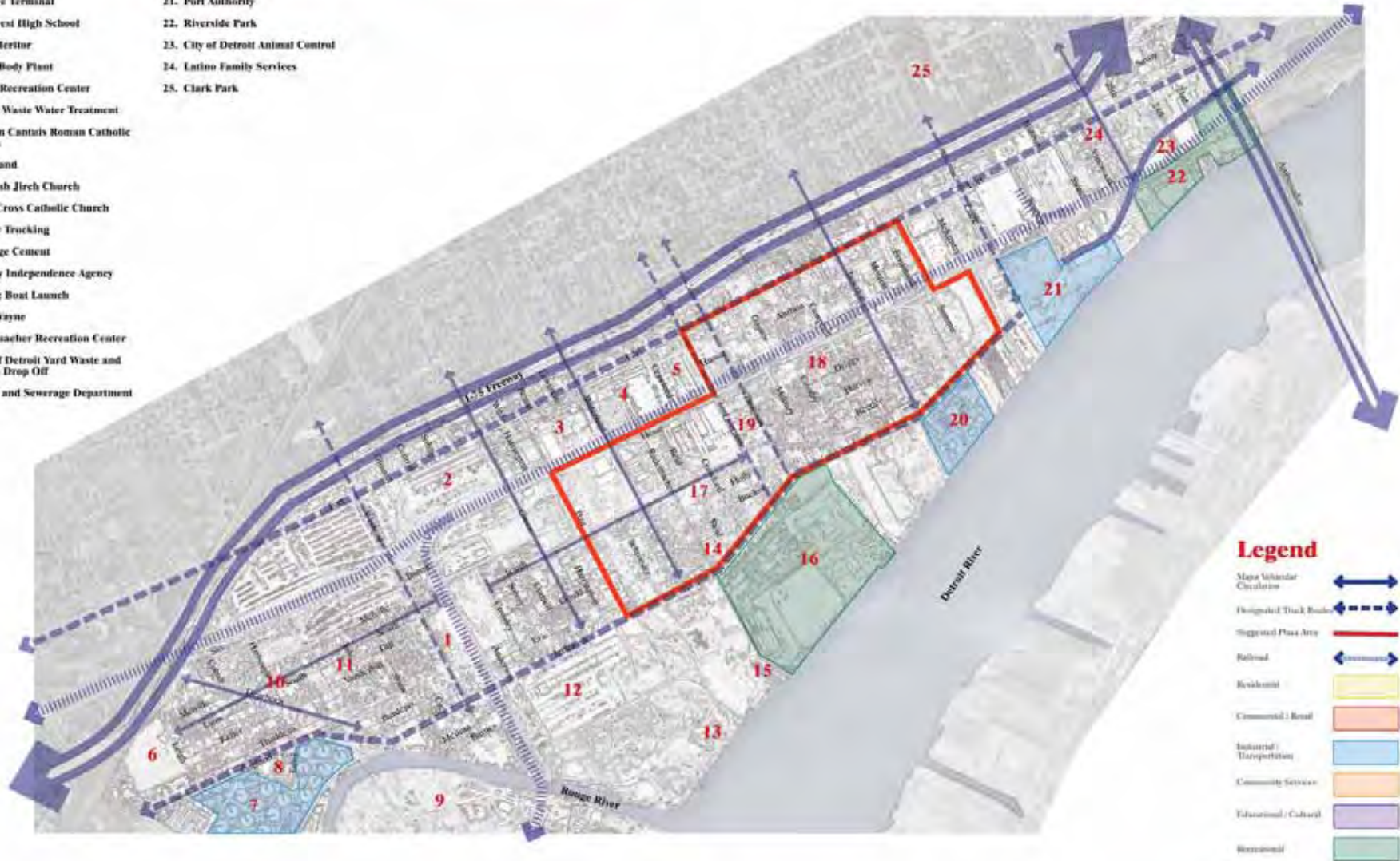
- Definition of a “land use plan”

..... the systematic assessment of land and water potential, alternatives for land use and economic and social conditions in order to select and adopt the best land-use options. Its purpose is to select and put into practice those land uses that will best meet the needs of the people while safeguarding resources for the future.

The driving force in planning is the need for change, the need for improved management or the need for a quite different pattern of land use dictated by changing circumstances.....

DELRAY AREA PLAN

- 1. McMillan School
- 2. Produce Terminal
- 3. Southwest High School
- 4. Arvin Meritor
- 5. Fisher Body Plant
- 6. Delray Recreation Center
- 7. Detroit Waste Water Treatment
- 8. St. John Cantuis Roman Catholic Church
- 9. Zug Island
- 10. Jehovah Jireh Church
- 11. Holy Cross Catholic Church
- 12. Yellow Trucking
- 13. LeFarge Cement
- 14. Family Independence Agency
- 15. Public Boat Launch
- 16. Fort Wayne
- 17. Rademacher Recreation Center
- 18. City of Detroit Yard Waste and Dump Drop Off
- 19. Water and Sewerage Department
- 20. Detroit Power Plant
- 21. Port Authority
- 22. Riverside Park
- 23. City of Detroit Animal Control
- 24. Latino Family Services
- 25. Clark Park



Legend

- Major Vehicular Circulation
- Designated Truck Route
- Suggested Pass Area
- Railroad
- Residential
- Commercial / Retail
- Industrial / Transportation
- Community Services
- Educational / Cultural
- Recreational

The Detroit River International Crossing Study

An aerial photograph of the Detroit River, showing the waterway flowing between the United States and Canada. The city of Detroit is visible on the left side, with several tall buildings. The right side shows a mix of residential and commercial buildings. The sky is overcast with light clouds. A dark blue rectangular box with a thin green border is centered over the river, containing the text 'Table Activities' in white.

Table Activities

The Detroit River International Crossing Study

An aerial photograph of the Detroit River, showing the waterway between the United States and Canada. The city of Detroit is visible on the left side, and Windsor, Ontario is on the right. The river flows from the background towards the foreground. A dark blue rectangular box with a thin green border is centered over the river, containing the text "Next Steps".

Next Steps

The Detroit River International Crossing Study

An aerial photograph of the Detroit River, showing the cityscapes of Detroit, Michigan on the left and Windsor, Ontario on the right. The river flows from the background towards the foreground, with a small island in the middle. The sky is overcast with grey clouds. A dark blue horizontal bar is at the top of the image, containing the title text.

Next Steps:

- Further Development of Delray Area Plan
 - ✓ Three Land Use Plans
 - ✓ Character Sketches

The Detroit River International Crossing Study

- Design Process



The Detroit River International Crossing Study

- Design Process



The Detroit River International Crossing Study

- Design Process



The Detroit River International Crossing Study

- Design Process



The Detroit River International Crossing Study

- Design Process



The Detroit River International Crossing Study

- Design Process



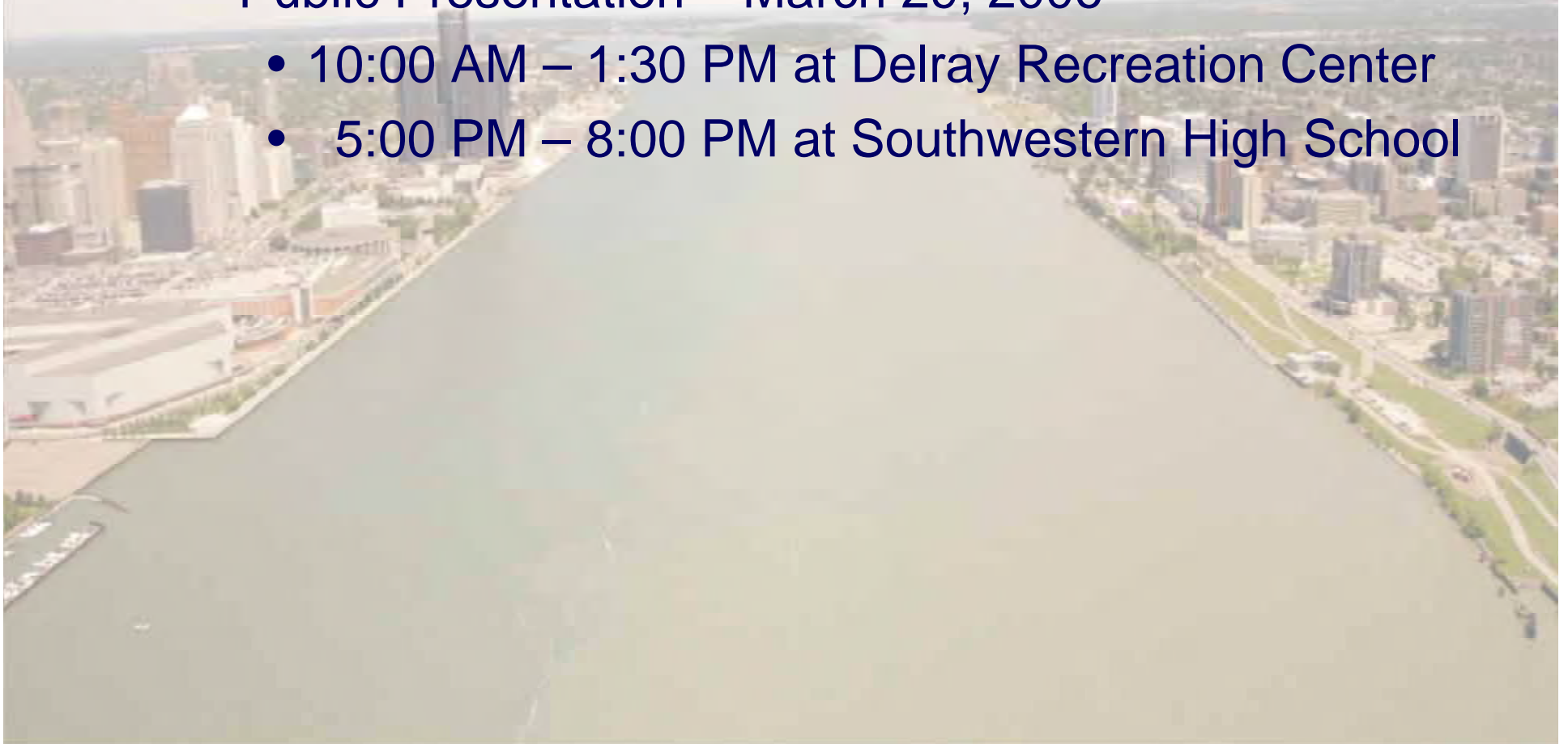
The Detroit River International Crossing Study

- Design Process



The Detroit River International Crossing Study

- **Upcoming meetings**
 - **Public Presentation – March 29, 2006**
 - 10:00 AM – 1:30 PM at Delray Recreation Center
 - 5:00 PM – 8:00 PM at Southwestern High School

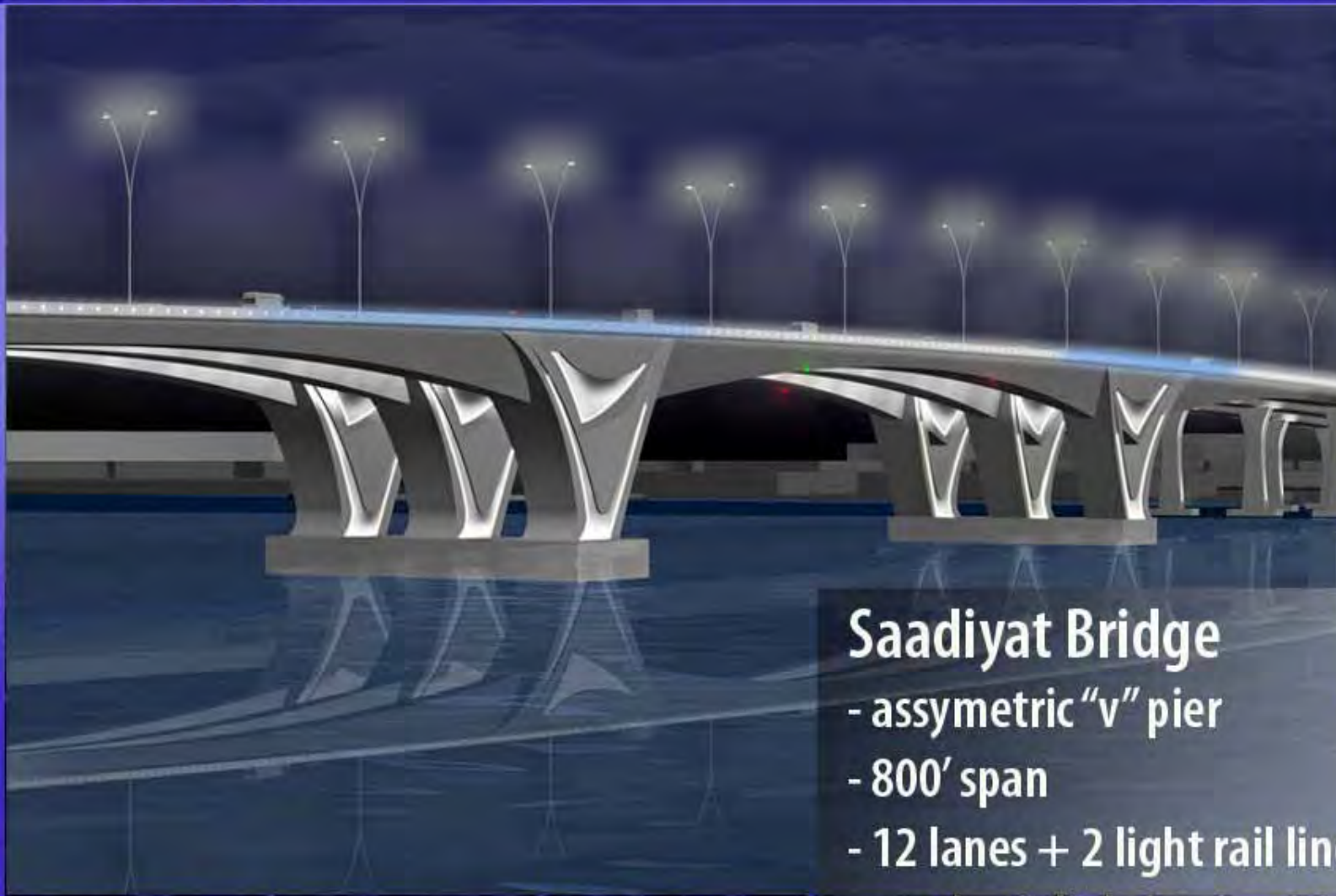


The Detroit River International Crossing Study

An aerial photograph of the Detroit River, showing the cityscapes of Detroit, Michigan on the left and Windsor, Ontario on the right. The river flows from the background towards the foreground, separating the two cities. The sky is overcast with grey clouds.

- **Context Sensitive Solutions –
Week of April 17, 2006
6:00 PM – 9:30 PM (tentative)**
 - Crossing
 - Plaza
 - Roadways

Bradley C. Touchstone, AIA - Bridge Architect



Saadiyat Bridge

- assymetric "v" pier
- 800' span
- 12 lanes + 2 light rail lines
- aesthetic lighting is critical



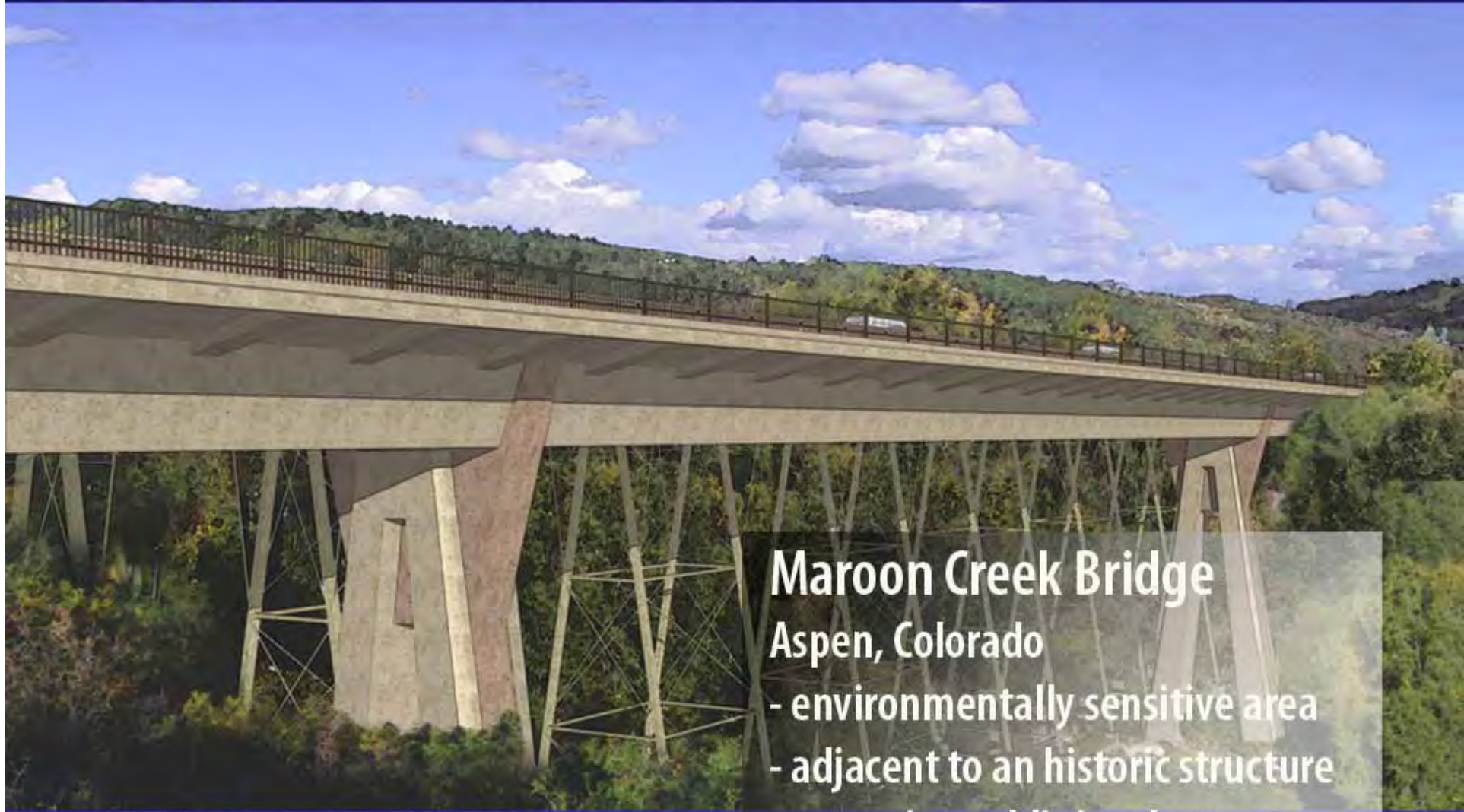
Bradley C. Touchstone, AIA - Bridge Architect



Maitland Interchange
Orlando, Florida
- split level interchange
- gateway to the community
of Maitland, FL



Bradley C. Touchstone, AIA - Bridge Architect



Maroon Creek Bridge Aspen, Colorado

- environmentally sensitive area
- adjacent to an historic structure
- extensive public involvement



Bradley C. Touchstone, AIA - Bridge Architect



St. Francisville Bridge
St. Francisville, Louisiana
- environmentally sensitive area
- longest cable-stayed bridge in
North America (1,500 ft. span)

World-Class Bridges



World-Class Bridges



World-Class Bridges



World-Class Bridges



World-Class Bridges



The Detroit River International Crossing Study

An aerial photograph of the Detroit River, showing the waterway flowing between the United States and Canada. The city of Detroit is visible on the left side, and Windsor, Ontario is visible on the right. The sky is overcast with light clouds. A dark blue rectangular box with a thin green border is centered over the river, containing the text "Questions/Comments" in white.

Questions/Comments

The Detroit River International Crossing Study

An aerial photograph of the Detroit River, showing the waterway between the United States and Canada. The river flows from the background towards the foreground, with a small island in the middle. On both sides, there are dense urban areas with various buildings and structures. The sky is overcast with light clouds.

Thank You