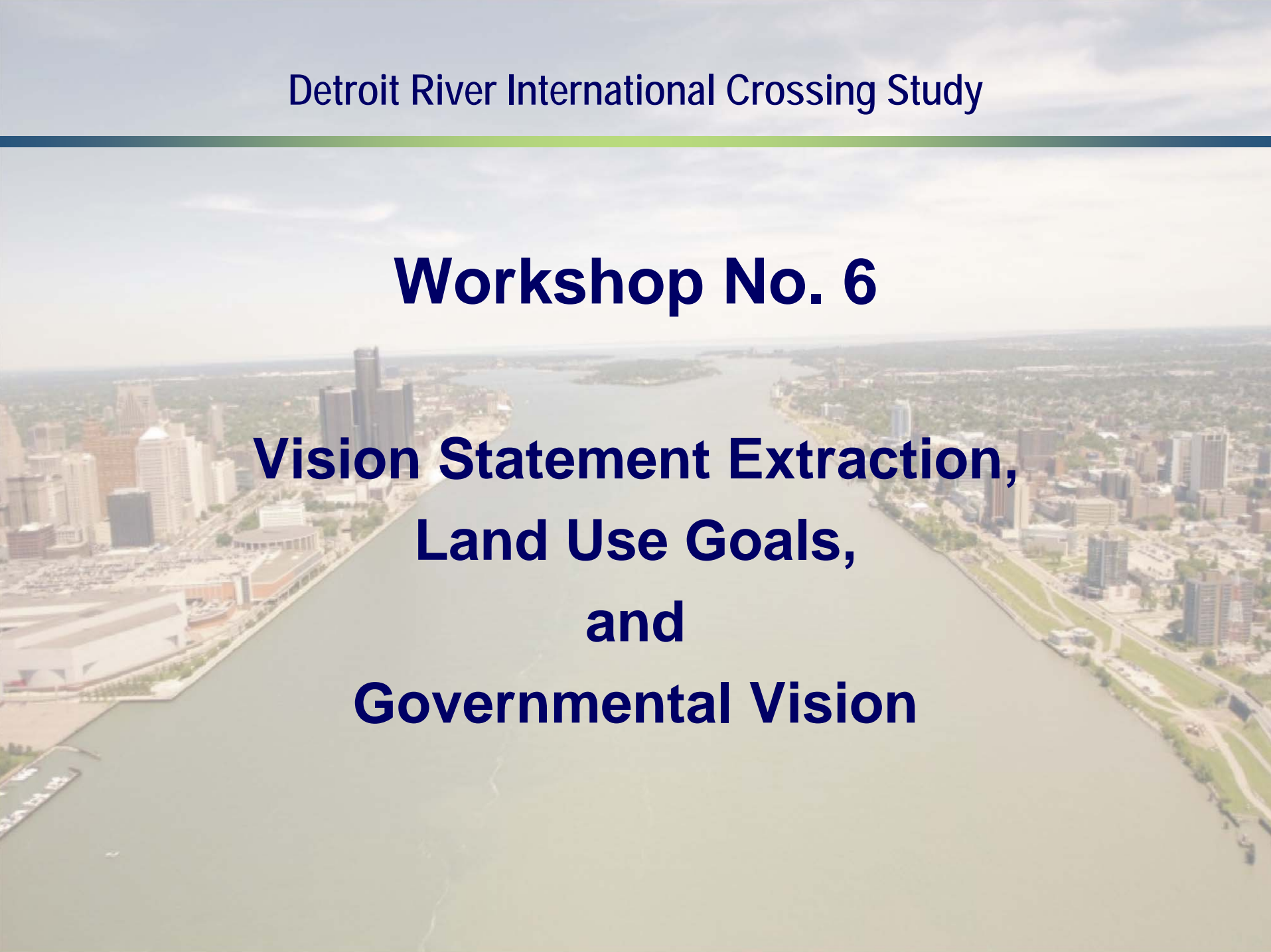


# Detroit River International Crossing Study

---

## **Workshop No. 6**

### **Vision Statement Extraction, Land Use Goals, and Governmental Vision**

An aerial photograph of the Detroit River, showing the city skyline on both sides. The river flows from the background towards the foreground, with a small island in the middle. The sky is overcast with grey clouds. The text is overlaid on the center of the image.

# Detroit River International Crossing Study

## Development of Practical Alternatives

### Workshop No. 6 – February 27, 2006

## Agenda

- Welcome (10 minutes)
  - ✓ Workshop Procedures
- Review Past Workshops (5 minutes)
- Vision Statement Extraction (5 minutes)
  - ✓ Without Bridge
  - ✓ With Bridge
- Breakout Group Activities
  - ✓ Land Use Goals
    - Commercial (5 minutes)
    - Ecology / Conservation (5 minutes)
    - Industry (5 minutes)
    - Recreation (5 minutes)
    - Transportation (5 minutes)
    - Residential (5 minutes)
    - Education / Cultural (5 minutes)
- ✓ Governmental Visions
  - Policy (5 minutes)
  - Services (5 minutes)
- ✓ Land Use and Governmental Visions preferential voting
- Next Steps (10 minutes)
  - ✓ Land Use and Governmental Visions preferential voting results
  - ✓ Delray Area Analysis
  - ✓ Visual Preference Survey

# Past Workshops

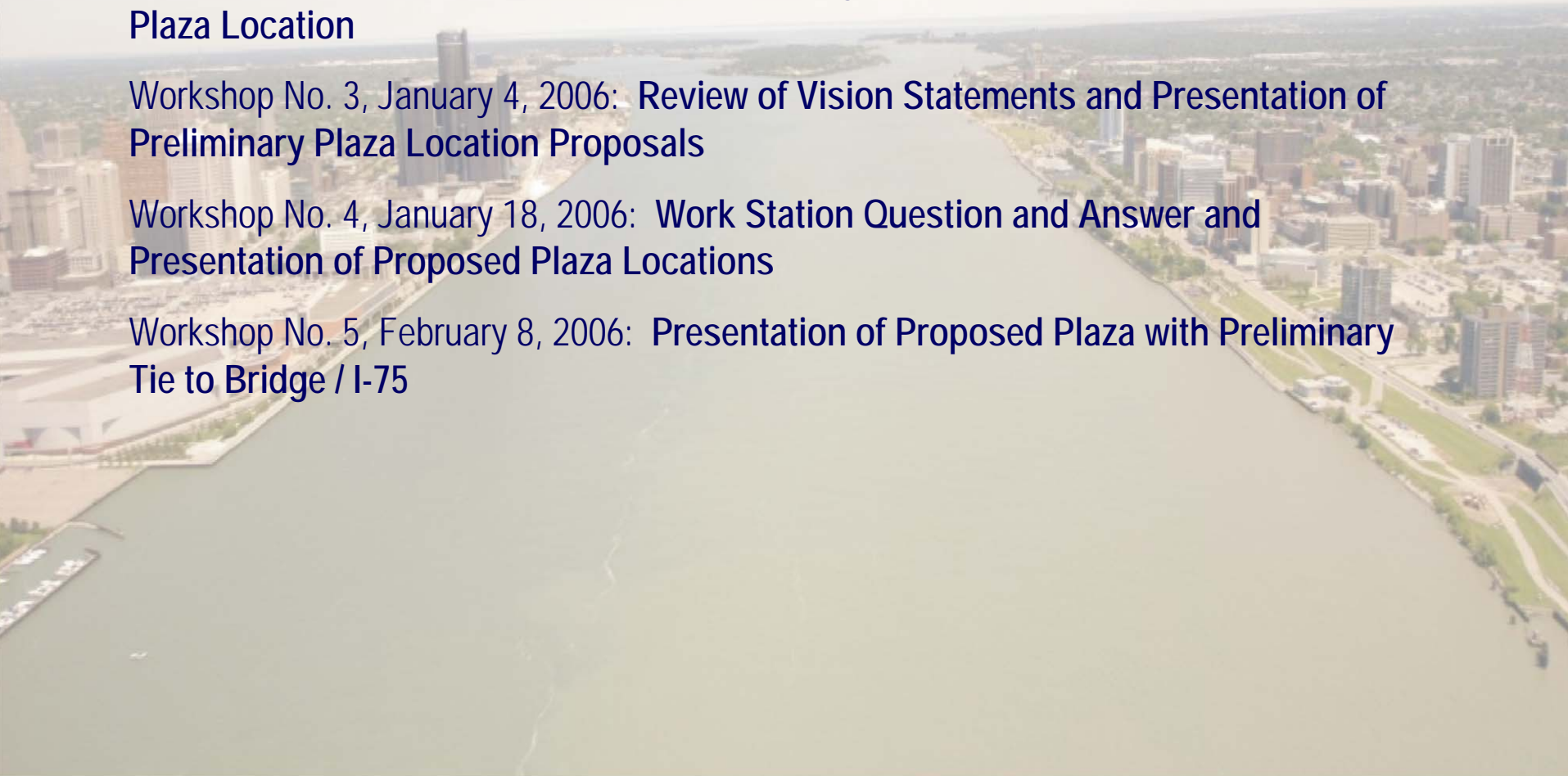
Workshop No. 1, December 14, 2005: **“Prouds” and “Concerns”, Visioning a successful and vibrant area WITH and WITHOUT a bridge**

Workshop No. 2, December 21, 2005: **Prioritizing Visions and the First Step Toward Plaza Location**

Workshop No. 3, January 4, 2006: **Review of Vision Statements and Presentation of Preliminary Plaza Location Proposals**

Workshop No. 4, January 18, 2006: **Work Station Question and Answer and Presentation of Proposed Plaza Locations**

Workshop No. 5, February 8, 2006: **Presentation of Proposed Plaza with Preliminary Tie to Bridge / I-75**



# Vision Statement

## Vision Statement WITHOUT a New River Crossing

*The area between Zug Island and the foot of the Ambassador Bridge along the Detroit River is clean and safe, with neighbors breathing clean air. New residential development is flourishing with families continuing to return. Historic structures are preserved, particularly the churches and Fort Wayne, which has become an international tourist attraction.*

*Developments in and around the area provide jobs with good wages for local residents. The City of Detroit supports this growth and development in a number of ways, including providing significant police and fire protection. Designated and policed truck routes further protect the neighborhoods in the area by directing heavy truck traffic around them.*

# Vision Statement

## Vision Statement WITH a New River Crossing

*The area between Zug Island and the foot of the Ambassador Bridge, known as the “host community” of a New River Crossing, is experiencing an every-improving quality of life.*

*The West Delray neighborhood is intact with no relocations because of the new river crossing, which is publicly owned and operated. Free housing has been provided to those few who were relocated. Improvements to housing and small businesses in the area are financed through a special fund designed to benefit the “host community” of the new river crossing. And, programs like the Neighborhood Enterprise Zone (NEZ) control the taxes of those who have remained in, and others who moved to, the area. Development that occurs in and around the new crossing supports good paying jobs for the local residents. The City of Detroit supports this growth in a number of ways, including providing significant police and fire protection. Further support of the area, including its air quality and the health of its residents, is caused by routing heavy trucks around the area over designated routes that are built to last.*

# Detroit River International Crossing Study

## Vision Statement Extraction

### Vision Statement WITHOUT a New River Crossing

*The area between Zug Island and the foot of the Ambassador Bridge along the Detroit River is clean and safe, with neighbors breathing clean air. New residential development is flourishing with families continuing to return. Historic structures are preserved, particularly the churches and Fort Wayne, which has become an international tourist attraction.*

*Developments in and around the area provide jobs with good wages for local residents. The City of Detroit supports this growth and development in a number of ways, including providing significant police and fire protection. Designated and policed truck routes further protect the neighborhoods in the area by directing heavy truck traffic around them.*

# Detroit River International Crossing Study

## Vision Statement Extraction

Vision Statement WITHOUT a New River Crossing

- *clean and safe, with neighbors breathing clean air*



# Detroit River International Crossing Study

## Vision Statement Extraction

### Vision Statement WITHOUT a New River Crossing

*The area between Zug Island and the foot of the Ambassador Bridge along the Detroit River is **New residential development is flourishing with families continuing to return. Historic structures are preserved, particularly the churches and Fort Wayne, which has become an international tourist attraction.***

*Developments in and around the area provide jobs with good wages for local residents. The City of Detroit supports this growth and development in a number of ways, including providing significant police and fire protection. Designated and policed truck routes further protect the neighborhoods in the area by directing heavy truck traffic around them.*

# Detroit River International Crossing Study

## Vision Statement Extraction

Vision Statement WITHOUT a New River Crossing

- *clean and safe, with neighbors breathing clean air*
- *New residential development*



# Detroit River International Crossing Study

## Vision Statement Extraction

Vision Statement WITHOUT a New River Crossing

*The area between Zug Island and the foot of the Ambassador Bridge along the Detroit River is*

*is flourishing with families continuing to return. Historic structures are preserved, particularly the churches and Fort Wayne, which has become an international tourist attraction.*

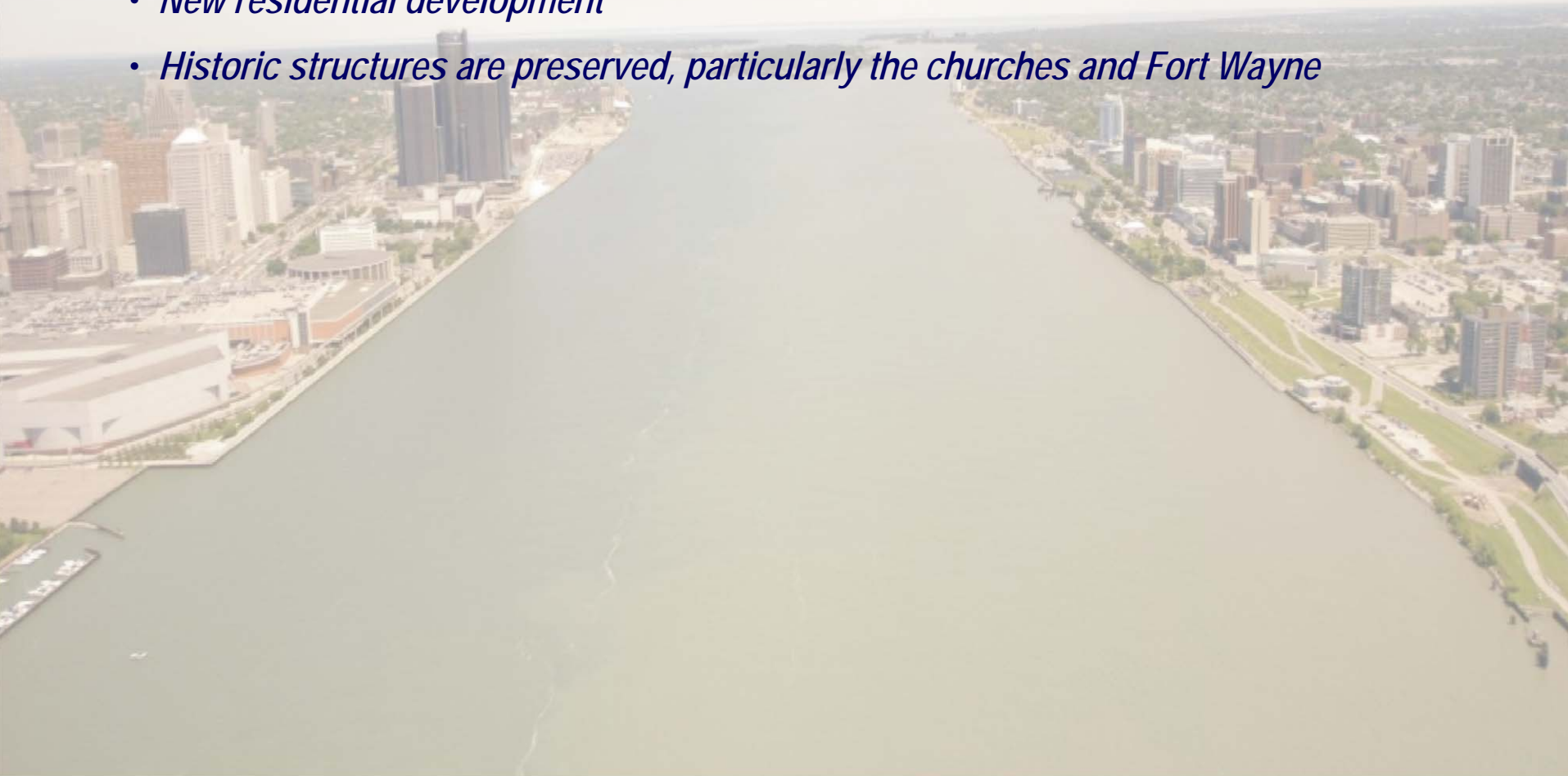
*Developments in and around the area provide jobs with good wages for local residents. The City of Detroit supports this growth and development in a number of ways, including providing significant police and fire protection. Designated and policed truck routes further protect the neighborhoods in the area by directing heavy truck traffic around them.*

# Detroit River International Crossing Study

## Vision Statement Extraction

Vision Statement WITHOUT a New River Crossing

- *clean and safe, with neighbors breathing clean air*
- *New residential development*
- *Historic structures are preserved, particularly the churches and Fort Wayne*



# Detroit River International Crossing Study

## Vision Statement Extraction

Vision Statement WITHOUT a New River Crossing

*The area between Zug Island and the foot of the Ambassador Bridge along the Detroit River is*

*is flourishing with families continuing to return.*

*, which has become an international tourist attraction.*

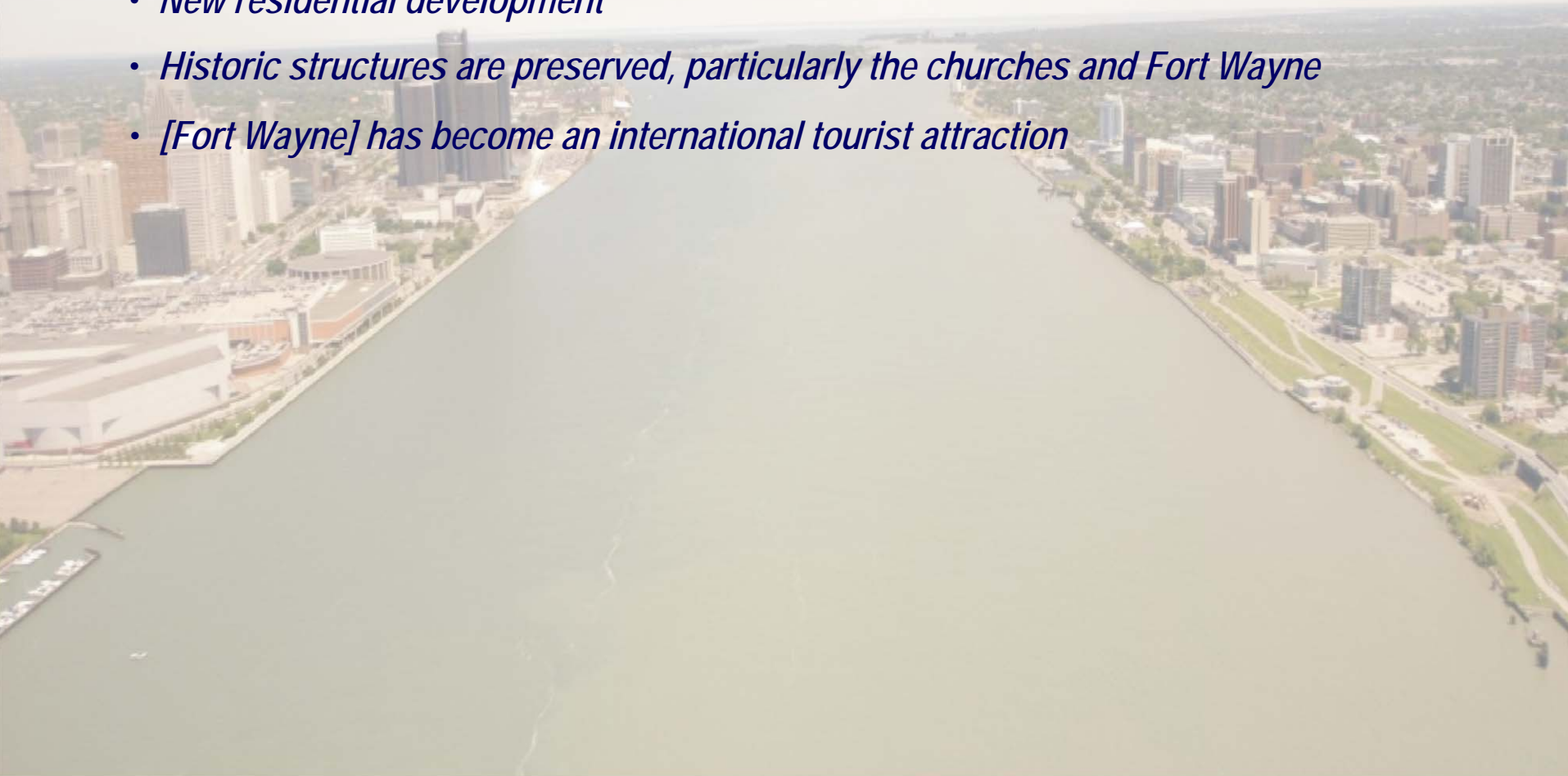
*Developments in and around the area provide jobs with good wages for local residents. The City of Detroit supports this growth and development in a number of ways, including providing significant police and fire protection. Designated and policed truck routes further protect the neighborhoods in the area by directing heavy truck traffic around them.*

# Detroit River International Crossing Study

## Vision Statement Extraction

Vision Statement WITHOUT a New River Crossing

- *clean and safe, with neighbors breathing clean air*
- *New residential development*
- *Historic structures are preserved, particularly the churches and Fort Wayne*
- *[Fort Wayne] has become an international tourist attraction*



# Detroit River International Crossing Study

## Vision Statement Extraction

Vision Statement WITHOUT a New River Crossing

*The area between Zug Island and the foot of the Ambassador Bridge along the Detroit River is*

*is flourishing with families continuing to return.*

*which*

*Developments in and around the area provide jobs with good wages for local residents. The City of Detroit supports this growth and development in a number of ways, including providing significant police and fire protection. Designated and policed truck routes further protect the neighborhoods in the area by directing heavy truck traffic around them.*

# Detroit River International Crossing Study

## Vision Statement Extraction

Vision Statement WITHOUT a New River Crossing

- *clean and safe, with neighbors breathing clean air*
- *New residential development*
- *Historic structures are preserved, particularly the churches and Fort Wayne*
- *[Fort Wayne] has become an international tourist attraction*
- *Developments in and around the area provide jobs with good wages for local residents.*

# Detroit River International Crossing Study

## Vision Statement Extraction

Vision Statement WITHOUT a New River Crossing

*The area between Zug Island and the foot of the Ambassador Bridge along the Detroit River is*

*is flourishing with families continuing to return.*

*which*

*The City of Detroit supports this growth and development in a number of ways, including providing significant police and fire protection. Designated and policed truck routes further protect the neighborhoods in the area by directing heavy truck traffic around them.*

# Detroit River International Crossing Study

## Vision Statement Extraction

Vision Statement WITHOUT a New River Crossing

- *clean and safe, with neighbors breathing clean air*
- *New residential development*
- *Historic structures are preserved, particularly the churches and Fort Wayne*
- *[Fort Wayne] has become an international tourist attraction*
- *Developments in and around the area provide jobs with good wages for local residents.*
- *significant police and fire protection*

# Detroit River International Crossing Study

## Vision Statement Extraction

Vision Statement WITHOUT a New River Crossing

*The area between Zug Island and the foot of the Ambassador Bridge along the Detroit River is*

*is flourishing with families continuing to return.*

*which*

*The City of Detroit supports this growth and development in a number of ways, including providing* *Designated and*  
*policed truck routes further protect the neighborhoods in the area by directing*  
*heavy truck traffic around them.*

# Detroit River International Crossing Study

## Vision Statement Extraction

Vision Statement WITHOUT a New River Crossing

- *clean and safe, with neighbors breathing clean air*
- *New residential development*
- *Historic structures are preserved, particularly the churches and Fort Wayne*
- *[Fort Wayne] has become an international tourist attraction*
- *Developments in and around the area provide jobs with good wages for local residents.*
- *significant police and fire protection*
- *Designated and policed truck routes*

# Detroit River International Crossing Study

## Vision Statement Extraction

### Vision Statement WITH a New River Crossing

*The area between Zug Island and the foot of the Ambassador Bridge, known as the “host community” of a New River Crossing, is experiencing an every-improving quality of life.*

*The West Delray neighborhood is intact with no relocations because of the new river crossing, which is publicly owned and operated. Free housing has been provided to those few who were relocated. Improvements to housing and small businesses in the area are financed through a special fund designed to benefit the “host community” of the new river crossing. And, programs like the Neighborhood Enterprise Zone (NEZ) control the taxes of those who have remained in, and others who moved to, the area. Development that occurs in and around the new crossing supports good paying jobs for the local residents. The City of Detroit supports this growth in a number of ways, including providing significant police and fire protection. Further support of the area, including its air quality and the health of its residents, is caused by routing heavy trucks around the area over designated routes that are built to last.*

# Detroit River International Crossing Study

## Vision Statement Extraction

Vision Statement WITH a New River Crossing

- *The West Delray neighborhood is intact with no relocations*



# Detroit River International Crossing Study

## Vision Statement Extraction

### Vision Statement WITH a New River Crossing

*The area between Zug Island and the foot of the Ambassador Bridge, known as the “host community” of a New River Crossing, is experiencing an every-improving quality of life.*

*because of the new river crossing, which is publicly owned and operated. Free housing has been provided to those few who were relocated. Improvements to housing and small businesses in the area are financed through a special fund designed to benefit the “host community” of the new river crossing. And, programs like the Neighborhood Enterprise Zone (NEZ) control the taxes of those who have remained in, and others who moved to, the area. Development that occurs in and around the new crossing supports good paying jobs for the local residents. The City of Detroit supports this growth in a number of ways, including providing significant police and fire protection. Further support of the area, including its air quality and the health of its residents, is caused by routing heavy trucks around the area over designated routes that are built to last.*

# Detroit River International Crossing Study

## Vision Statement Extraction

Vision Statement WITH a New River Crossing

- *The West Delray neighborhood is intact with no relocations*
- *the new river crossing, which is publicly owned and operated*



# Detroit River International Crossing Study

## Vision Statement Extraction

### Vision Statement WITH a New River Crossing

*The area between Zug Island and the foot of the Ambassador Bridge, known as the “host community” of a New River Crossing, is experiencing an every-improving quality of life.*

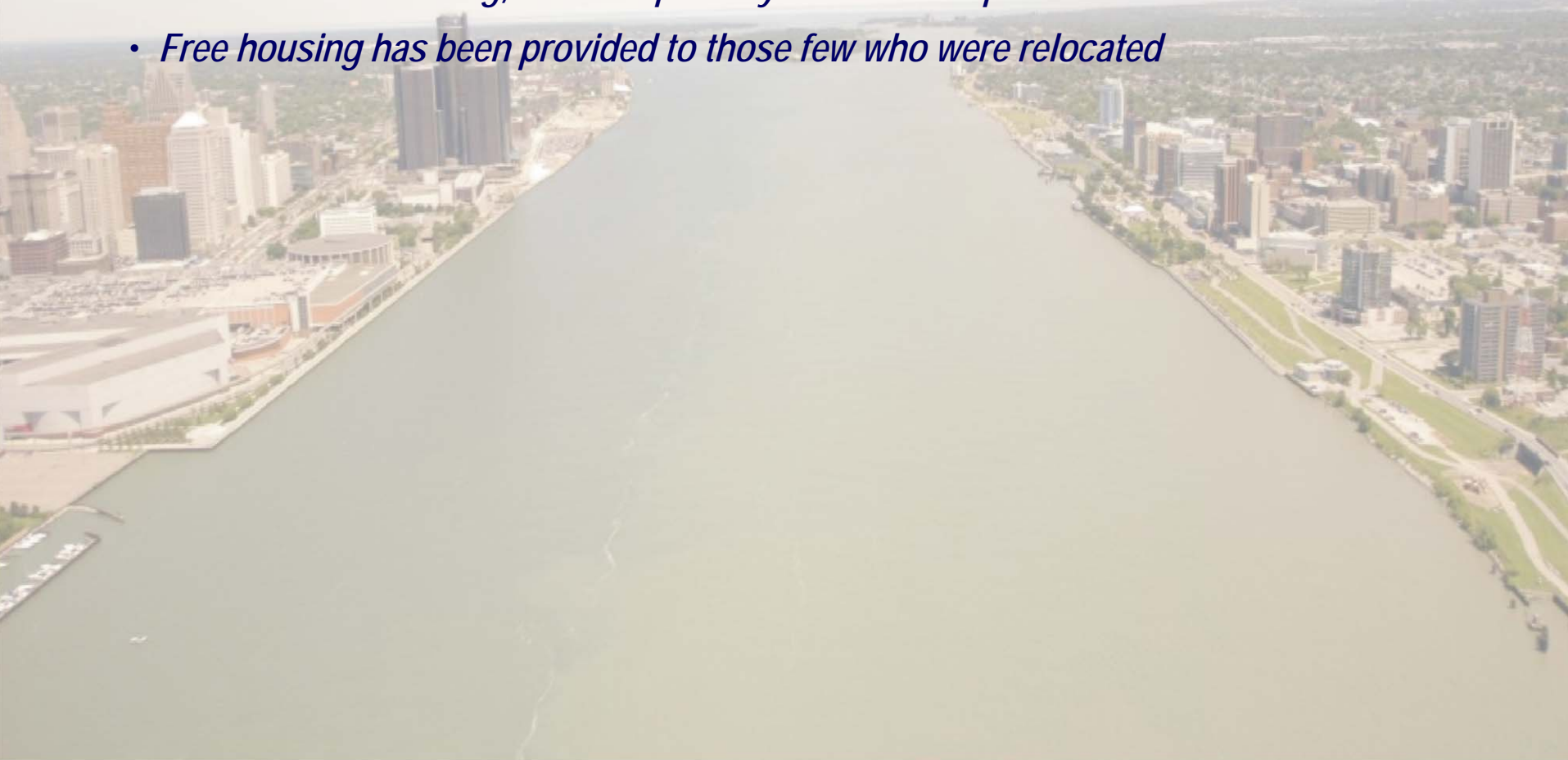
*because of Free housing has been provided to those few who were relocated. Improvements to housing and small businesses in the area are financed through a special fund designed to benefit the “host community” of the new river crossing. And, programs like the Neighborhood Enterprise Zone (NEZ) control the taxes of those who have remained in, and others who moved to, the area. Development that occurs in and around the new crossing supports good paying jobs for the local residents. The City of Detroit supports this growth in a number of ways, including providing significant police and fire protection. Further support of the area, including its air quality and the health of its residents, is caused by routing heavy trucks around the area over designated routes that are built to last.*

# Detroit River International Crossing Study

## Vision Statement Extraction

Vision Statement WITH a New River Crossing

- *The West Delray neighborhood is intact with no relocations*
- *the new river crossing, which is publicly owned and operated*
- *Free housing has been provided to those few who were relocated*



# Detroit River International Crossing Study

## Vision Statement Extraction

### Vision Statement WITH a New River Crossing

*The area between Zug Island and the foot of the Ambassador Bridge, known as the “host community” of a New River Crossing, is experiencing an every-improving quality of life.*

*because of*

*Improvements to housing and small businesses in the area are financed through a special fund designed to benefit the “host community” of the new river crossing. And, programs like the Neighborhood Enterprise Zone (NEZ) control the taxes of those who have remained in, and others who moved to, the area. Development that occurs in and around the new crossing supports good paying jobs for the local residents. The City of Detroit supports this growth in a number of ways, including providing significant police and fire protection. Further support of the area, including its air quality and the health of its residents, is caused by routing heavy trucks around the area over designated routes that are built to last.*

# Detroit River International Crossing Study

## Vision Statement Extraction

### Vision Statement WITH a New River Crossing

- *The West Delray neighborhood is intact with no relocations*
- *the new river crossing, which is publicly owned and operated*
- *Free housing has been provided to those few who were relocated*
- *Improvements to housing and small businesses in the area are financed through a special fund designed to benefit the “host community” of the new river crossing*

# Detroit River International Crossing Study

## Vision Statement Extraction

Vision Statement WITH a New River Crossing

*The area between Zug Island and the foot of the Ambassador Bridge, known as the “host community” of a New River Crossing, is experiencing an every-improving quality of life.*

*because of*

*And, programs like the Neighborhood Enterprise Zone (NEZ) control the taxes of those who have remained in, and others who moved to, the area. Development that occurs in and around the new crossing supports good paying jobs for the local residents. The City of Detroit supports this growth in a number of ways, including providing significant police and fire protection. Further support of the area, including its air quality and the health of its residents, is caused by routing heavy trucks around the area over designated routes that are built to last.*

# Detroit River International Crossing Study

## Vision Statement Extraction

### Vision Statement WITH a New River Crossing

- *The West Delray neighborhood is intact with no relocations*
- *the new river crossing, which is publicly owned and operated*
- *Free housing has been provided to those few who were relocated*
- *Improvements to housing and small businesses in the area are financed through a special fund designed to benefit the “host community” of the new river crossing*
- *programs like the Neighborhood Enterprise Zone (NEZ) control the taxes*

An aerial photograph of the Detroit River, showing the city skyline on both sides. The river flows from the top center towards the bottom center. The city buildings are visible on both banks, with a mix of modern skyscrapers and older structures. The sky is overcast with grey clouds. A green horizontal bar is positioned below the title.

# Detroit River International Crossing Study

## Vision Statement Extraction

Vision Statement WITH a New River Crossing

*The area between Zug Island and the foot of the Ambassador Bridge, known as the “host community” of a New River Crossing, is experiencing an every-improving quality of life.*

*because of*

*And, of those who have remained in, and others who moved to, the area. Development that occurs in and around the new crossing supports good paying jobs for the local residents . The City of Detroit supports this growth in a number of ways, including providing significant police and fire protection. Further support of the area, including its air quality and the health of its residents, is caused by routing heavy trucks around the area over designated routes that are built to last.*

# Detroit River International Crossing Study

## Vision Statement Extraction

### Vision Statement WITH a New River Crossing

- *The West Delray neighborhood is intact with no relocations*
- *the new river crossing, which is publicly owned and operated*
- *Free housing has been provided to those few who were relocated*
- *Improvements to housing and small businesses in the area are financed through a special fund designed to benefit the “host community” of the new river crossing*
- *programs like the Neighborhood Enterprise Zone (NEZ) control the taxes*
- *Development supports good paying jobs for the local residents*

An aerial photograph of the Detroit River, showing the city skyline on both sides. The river flows from the top center towards the bottom center. The city buildings are visible on the left and right banks. The sky is overcast with grey clouds. A green horizontal bar is located at the top of the page, below the title.

# Detroit River International Crossing Study

## Vision Statement Extraction

Vision Statement WITH a New River Crossing

*The area between Zug Island and the foot of the Ambassador Bridge, known as the “host community” of a New River Crossing, is experiencing an every-improving quality of life.*

*because of*

*who moved to, the area.*

*And,  
of those who have remained in, and others  
that occurs in and around the new crossing*

*The City of Detroit supports this  
growth in a number of ways, including providing significant police and fire  
protection. Further support of the area, including its air quality and the health of its  
residents, is caused by routing heavy trucks around the area over designated routes  
that are built to last.*

# Detroit River International Crossing Study

## Vision Statement Extraction

### Vision Statement WITH a New River Crossing

- *The West Delray neighborhood is intact with no relocations*
- *the new river crossing, which is publicly owned and operated*
- *Free housing has been provided to those few who were relocated*
- *Improvements to housing and small businesses in the area are financed through a special fund designed to benefit the “host community” of the new river crossing*
- *programs like the Neighborhood Enterprise Zone (NEZ) control the taxes*
- *Development supports good paying jobs for the local residents*
- *significant police and fire protection*

# Detroit River International Crossing Study

## Vision Statement Extraction

Vision Statement WITH a New River Crossing

*The area between Zug Island and the foot of the Ambassador Bridge, known as the “host community” of a New River Crossing, is experiencing an every-improving quality of life.*

*because of*

*And, of those who have remained in, and others who moved to, the area. The City of Detroit supports this growth in a number of ways, including providing further support of the area, including its air quality and the health of its residents, is caused by routing heavy trucks around the area over designated routes that are built to last.*

# Detroit River International Crossing Study

## Vision Statement Extraction

### Vision Statement WITH a New River Crossing

- *The West Delray neighborhood is intact with no relocations*
- *the new river crossing, which is publicly owned and operated*
- *Free housing has been provided to those few who were relocated*
- *Improvements to housing and small businesses in the area are financed through a special fund designed to benefit the “host community” of the new river crossing*
- *programs like the Neighborhood Enterprise Zone (NEZ) control the taxes*
- *Development supports good paying jobs for the local residents*
- *significant police and fire protection*
- *routing heavy trucks around the area over designated routes that are built to last*

Detroit River International Crossing Study  
Breakout Group Activities

- Commercial

- Residential

- Education / Cultural

- Policy

- Services

- Transportation



Detroit River International Crossing Study

# Breakout Group Activities

- 
- An aerial photograph of the Detroit River, showing the city skyline on both sides. The river flows from the background towards the foreground, separating the two urban areas. The sky is overcast with grey clouds. The text of the breakout group activities is overlaid on the image.
- Commercial
  - Ecology / Conservation
  - Transportation
  - Residential
  - Education / Cultural
  - Policy
  - Services

Detroit River International Crossing Study  
Breakout Group Activities

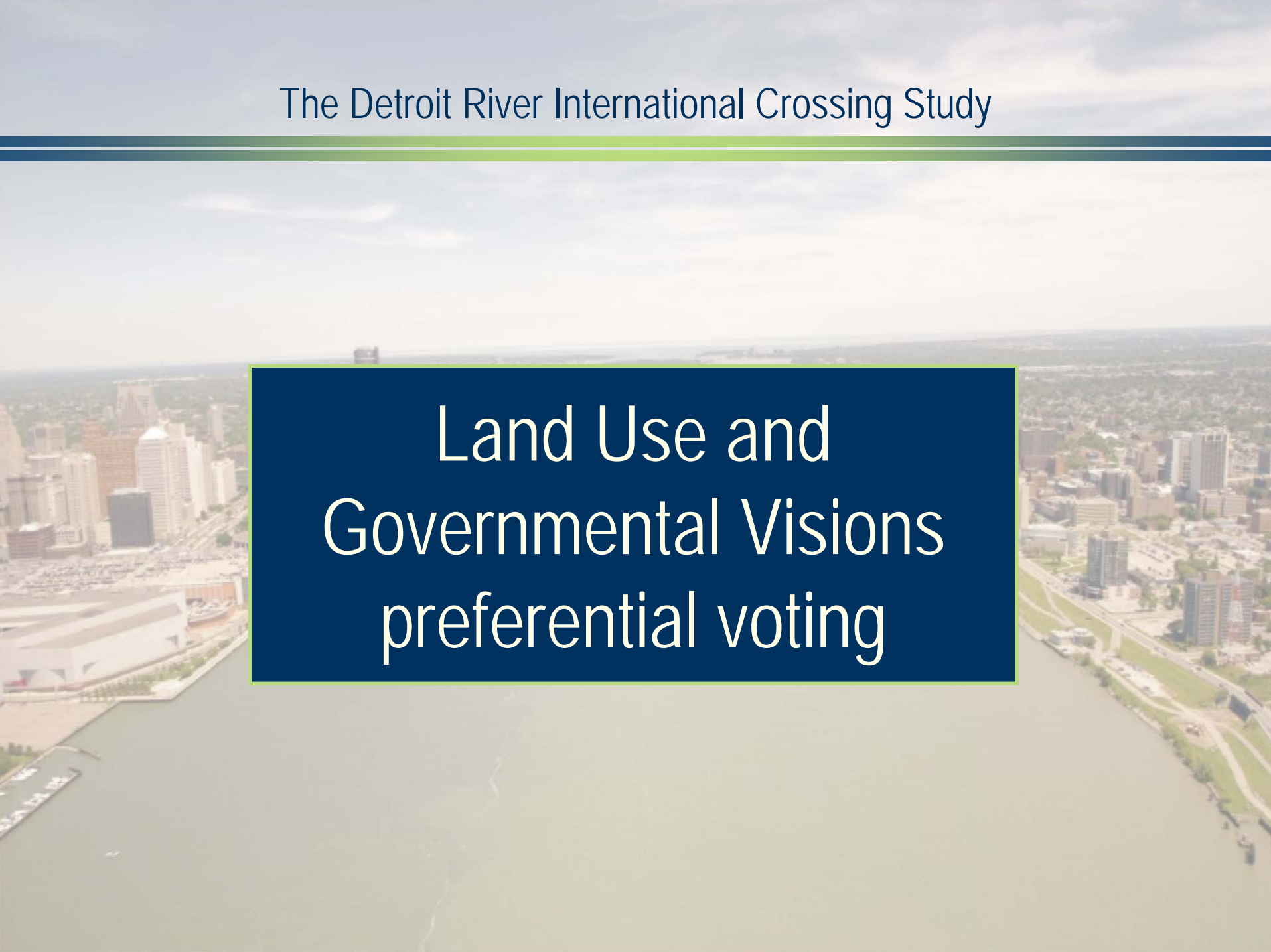
- 
- An aerial photograph of the Detroit River, showing the city skyline on both sides. The water is a light brownish-grey color. The city buildings are mostly grey and brown. The sky is overcast with grey clouds. The text is overlaid on the image in a dark blue font.
- Commercial
  - Ecology / Conservation
  - Industry
  - Transportation
  - Residential
  - Education / Cultural
  - Policy
  - Services

Detroit River International Crossing Study

# Breakout Group Activities

- 
- An aerial photograph of the Detroit River, showing the city skyline on both sides. The water is a light brownish-grey color, and the city buildings are visible in the background. The sky is overcast with grey clouds. A green horizontal bar is positioned below the title.
- Commercial
  - Ecology / Conservation
  - Industry
  - Recreation
  - Transportation
  - Residential
  - Education / Cultural
  - Policy
  - Services

# The Detroit River International Crossing Study

An aerial photograph of Detroit, Michigan, showing the city skyline and the Detroit River. The image is used as a background for the title slide. A dark blue rectangular box with a thin green border is centered over the image, containing the main title text in white. The text is arranged in four lines: "Land Use and", "Governmental Visions", "preferential voting".

Land Use and  
Governmental Visions  
preferential voting

# The Detroit River International Crossing Study

An aerial photograph of the Detroit River, showing the city of Detroit on the left and Windsor, Ontario on the right. The river flows from the background towards the foreground. A dark blue rectangular box with a thin green border is centered over the river, containing the text "Next Steps" in white. The sky is overcast with grey clouds.

Next Steps

# The Detroit River International Crossing

Questions/Comments

# The Detroit River International Crossing

An aerial photograph of the Detroit River, showing the city skyline of Detroit on the left and Windsor on the right. The river flows through the center. A dark blue rectangular box with a thin green border is overlaid in the middle of the image, containing the text "Thank You" in white. The sky is overcast with grey clouds.

Thank You